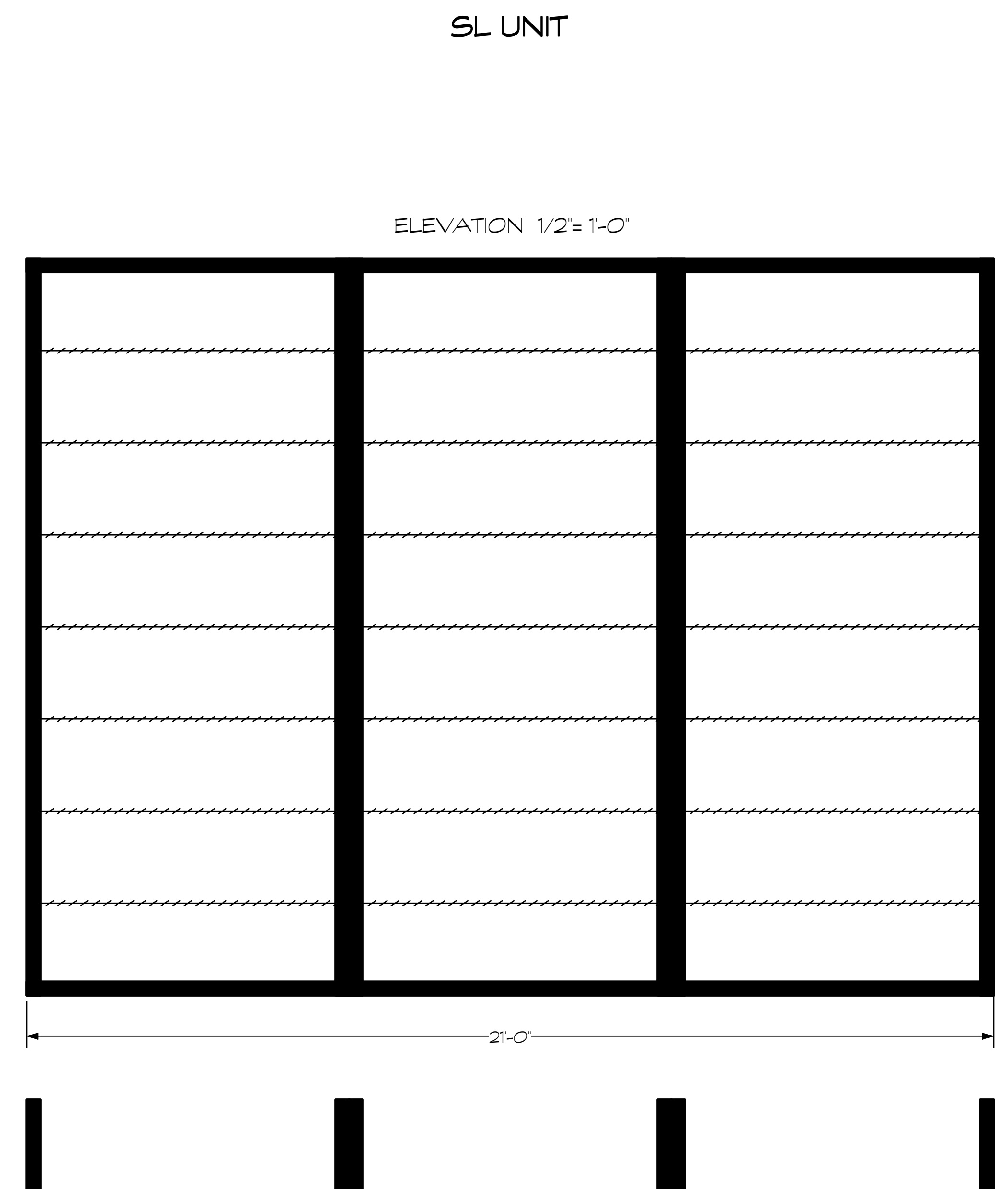


PLAN VIEW 1/2" = 1'-0"



Typical spacing of 7'; flats constructed of 1x4 hog trough on face 7w x 16' tall.

Paint in dark green with some camouflage splotches BEFORE stringing barbed wire.

Run barbed wire across entire unit and cut at each break to move units.



L.D. 194
LIGHTING DESIGNER
SIGNATURE *MB*

Opera Carolina
Sandra Levine Theater

The Falling and the Rising

Scenic Elevations 1/2" = 1'-0"

Lighting, Video & Scenery by: Michael Baumgarten
Directed by: Sam Mungo
Plate 1 of 1
REVISED: 16 November 2021