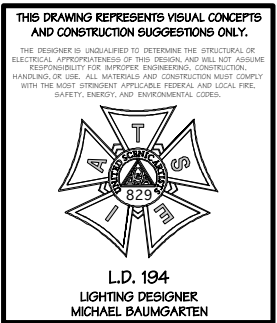
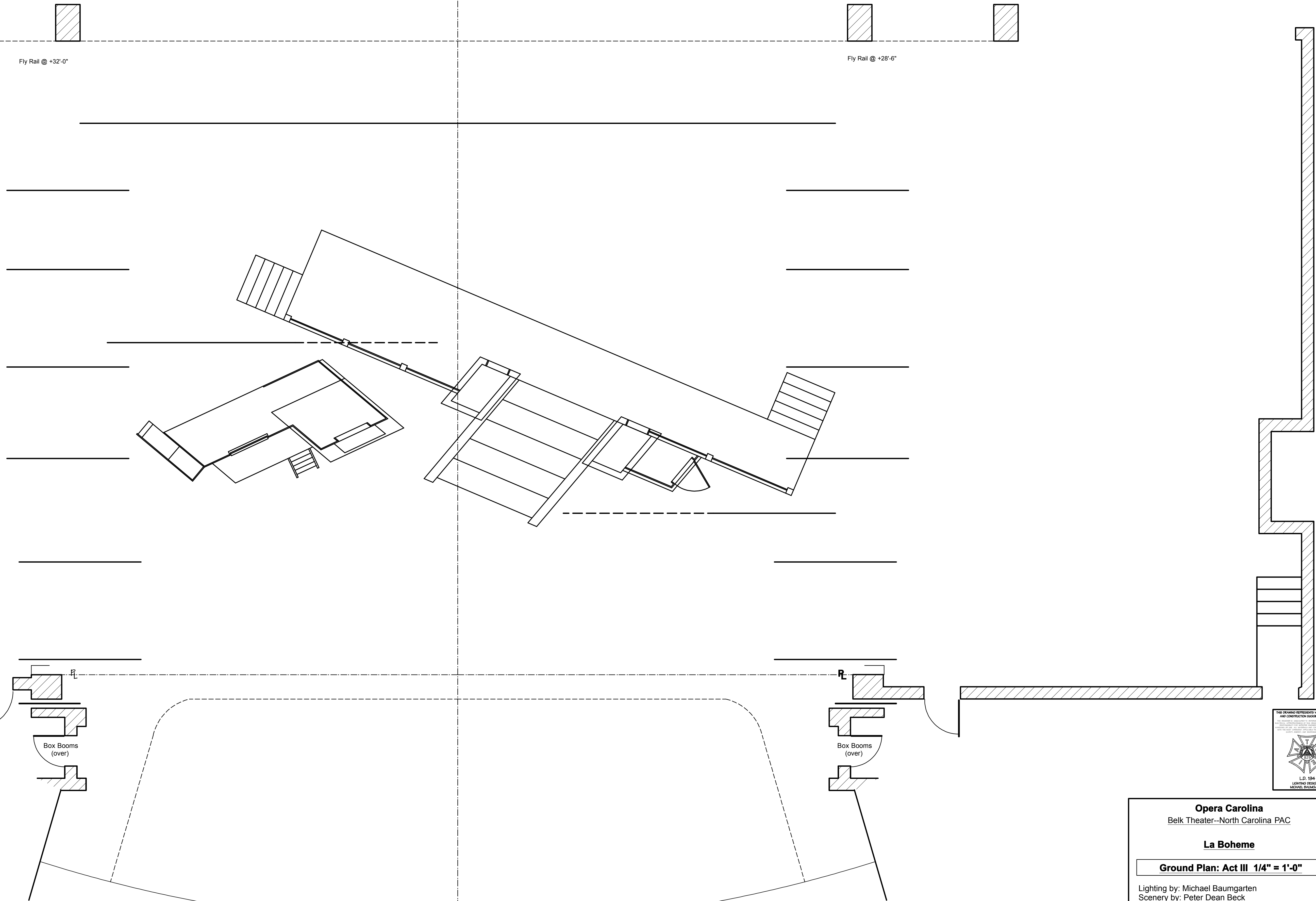


- 85: 47'-3"
84: 46'-9"
83: 46'-3"
82: 45'-9"
81: 45'-3" ACT III--Snow Drop
80: 44'-9" ACT IV--Sky Drop
79: 44'-3"
78: 43'-9"
77: 43'-3"
76: 42'-9"
75: 42'-3"
74: 41'-9"
73: 40'-9" 8 ELECTRIC; Trim to approx: +32'-0"
72: 40'-3"
71: 39'-9" #6 Black Legs; 27'-0" to CL
70: 39'-3" #6 Black Border; Trim to: +27'-0"
69: 38'-9"
68: 38'-3"
67: 37'-9"
66: 37'-3" 7 ELECTRIC; Trim to approx: +32'-0"
65: 36'-9"
64: 36'-3"
63: 35'-9"
62: 35'-3"
61: 34'-9"
60: 34'-3"
59: 33'-9" ACT II--Backdrop
58: 33'-3" #5 Black Legs; 27'-0" to CL
57: 32'-9" #5 Black Border; Trim to: +27'-0"
56: 32'-3"
55: 31'-9" 6 ELECTRIC; Trim to approx: +33'-0"
54: 31'-3"
53: 30'-3"
52: 29'-9" FOCUS TRACK #4
51: 29'-3"
50: 28'-9"
49: 28'-3" 5 ELECTRIC; Trim to approx: +31'-0"
48: 27'-9"
47: 27'-3" ACT III--SR Scrim Tree Leg
46: 26'-9"
45: 26'-3" ACT III--US Snow Bag
44: 25'-9" ACT III--US Snow Bag
43: 25'-3" #4 Black Legs; 27'-0" to CL
42: 24'-9" #4 Black Border; Trim to: +27'-0"
41: 24'-3"
40: 23'-9"
39: 23'-3"
38: 22'-9"
37: 22'-3"
36: 21'-9"
35: 21'-3" ACT II--SR Window
34: 20'-9" ACT II--Chandelier and Tail Down
33: 19'-9"
32: 19'-3" 4 ELECTRIC; Trim to approx: +32'-0"
31: 18'-9"
30: 18'-3" FOCUS TRACK #3
29: 17'-9" #3 Black Legs; 27'-0" to CL
28: 17'-3" #3 Black Border; Trim to: +27'-0"
27: 16'-9"
26: 16'-3"
25: 15'-9" FOCUS TRACK #2
24: 15'-3"
23: 14'-9" 3 ELECTRIC; Trim to approx: +32'-0"
22: 14'-3" ACT III--DS Snow Bag
21: 13'-9" ACT III--DS Snow Bag (Trim Snow Bag just above 3E)
20: 13'-3" ACT III--SL Scrim Tree Leg
19: 12'-9" ACT II--HEADER
18: 12'-3"
17: 11'-9"
16: 11'-3"
15: 10'-9"
14: 10'-3" ACT II--HEADER
13: 9'-3" #2 Black Legs; 26'-0" to CL
12: 8'-9" #2 Black Border; Trim to: +27'-0"
11: 8'-3"
10: 7'-9"
9: 7'-3" 2 ELECTRIC; Trim to approx: +33'-0"
8: 6'-9"
7: 6'-3" FOCUS TRACK #1
6: 4'-9" 1 ELECTRIC; Trim to approx: +31'-0"
5: 3'-9" 'A' ELECTRIC; Trim to approx: +30'-0"
4: 3'-3"
3: 2'-3" Main Curtain
2: 1'-3" #1 Black Border (+26'-0") & Legs 26'-0" to CL
1: 0'-9" Surtitle Screen; Trim to: +25'-0"

PL
Line List



Opera Carolina
Belk Theater--North Carolina PAC

La Boheme

Ground Plan: Act III 1/4" = 1'-0"

Lighting by: Michael Baumgarten
Scenery by: Peter Dean Beck
Directed by: John Hoomes
Plate 3 of 3
REVISED: 4 January 2010