

**OFFSTAGE RIGHT  
PROP TABLE**

(1) ABACUS  
(1) TREASURE BOX  
(1) BLACK LANTERN  
(1) PIPE BOX w/pipe, matches  
(1) AXE  
(3) MEDIUM SCROLLS  
(3) GOLD TRAYS w/treasure

**ON PONG WAGON:**

(1) RED PONG FAN

**FURNITURE/LARGE PROPS:**

(1) GRINDSTONE (in **G** platform)

**IN POLE BOX:**

(6) SKULL STICKS  
(1) HEAD STAFF  
(2) BLACK METAL POLES  
(2) TALL RED POLES  
(1) PEASANT STICK  
(4) RED PADDED POLES  
(2) YELLOW POLES

**TOP OF SHOW PRESET  
(See Diagrams For Onstage Placements)**

N/A

**OFFSTAGE LEFT  
PROP TABLE**

(6) WHITE HANDMAIDEN FANS  
(2) SMALL SCROLLS  
(3) RIDDLE SCROLLS  
(4) DAGGERS  
(1) TREASURE BOX  
(1) RED LANTERN

**FURNITURE/LARGE PROPS:**

(1) YELLOW COFFEE TABLE  
(3) YELLOW CHAIRS

**ON PING WAGON:**

(1) BLUE PING FAN

**ON PANG WAGON**

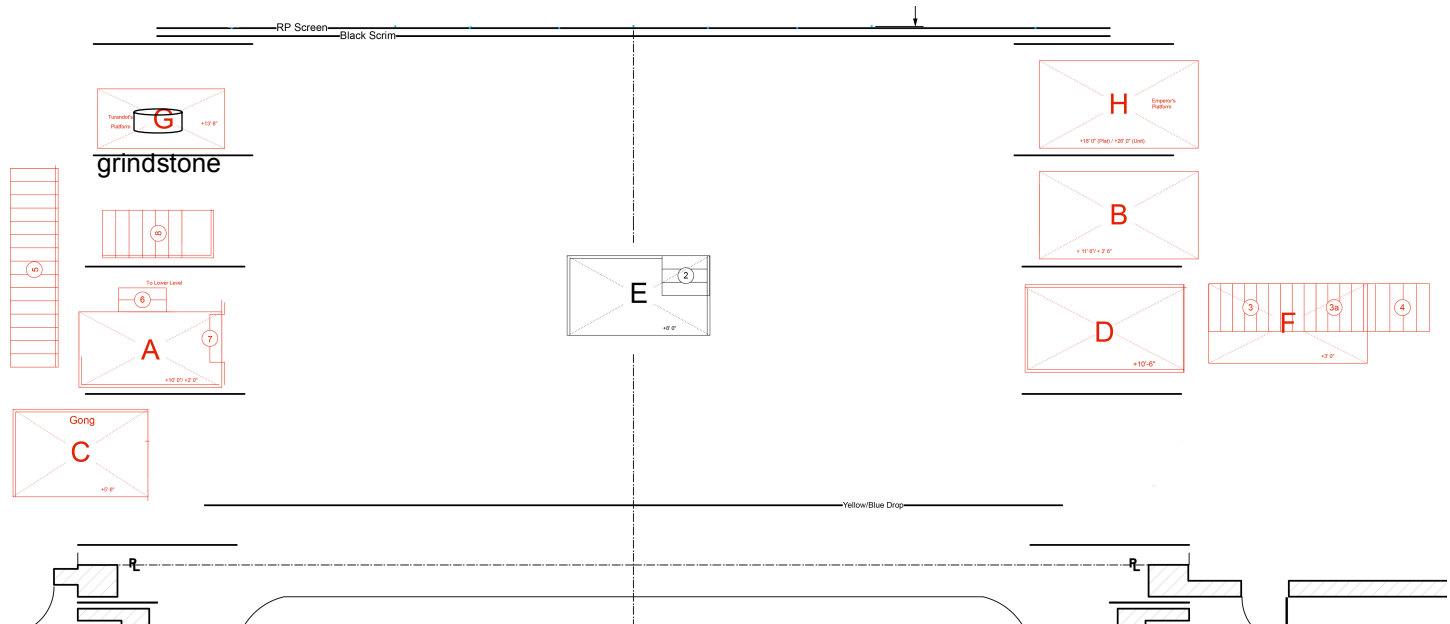
(1) RED PANG FAN

**IN POLE BOX:**

(1) TIMUR STAFF  
(2) TALL RED POLES  
(1) PEASANT STICK  
(2) YELLOW POLES

SEE NEXT PAGE FOR ACT I ONSTAGE DIAGRAM AND PRESET

TOP OF SHOW PRESET  
ACT I



SPIKED IN ORANGE ONSTAGE

**STAGE RIGHT  
OFF/ONSTAGE RIGHT**

(1) AXE

**ON PONG WAGON:**

(1) RED PONG FAN

**FURNITURE/LARGE PROPS:**

(1) GRINDSTONE (in G platform)

**IN POLE BOX:**

- (6) SKULL STICKS
- (1) HEAD STAFF
- (2) BLACK METAL POLES
- (2) TALL RED POLES
- (1) PEASANT STICK
- (4) RED PADDED POLES

**ONSTAGE  
ONSTAGE CENTER**

N/A

**STAGE LEFT  
ONSTAGE LEFT**

(6) WHITE HANDMAIDEN FANS

**ON PING WAGON:**

(1) BLUE PING FAN

**ON PANG WAGON**

(1) RED PANG FAN

**IN POLE BOX:**

- (1) TIMUR STAFF
- (2) TALL RED POLES
- (1) PEASANT STICK

SEE NEXT PAGE FOR ACT I RUNNING NOTES AND INTERMISSION SHIFT

**ACT I – RUNNING NOTES:**

TIME:	WHAT:	ACTION:	WHERE:	NOTES:
<b>PRESHOW</b>	PRESHOW	SWEEP/MOP	ONSTAGE	
<b>TOS</b>	KABUKI CURTAINS	RECEIVE	USR/USL	FROM SUPERS
<b>7:40</b>	GRINDSTONE	RECEIVE	USR	FROM SUPERS; DEAD
<b>16:30</b>	PONG	ASSIST	USR	ASSIST PONG INTO WAGON

**32:40—END OF ACT I**

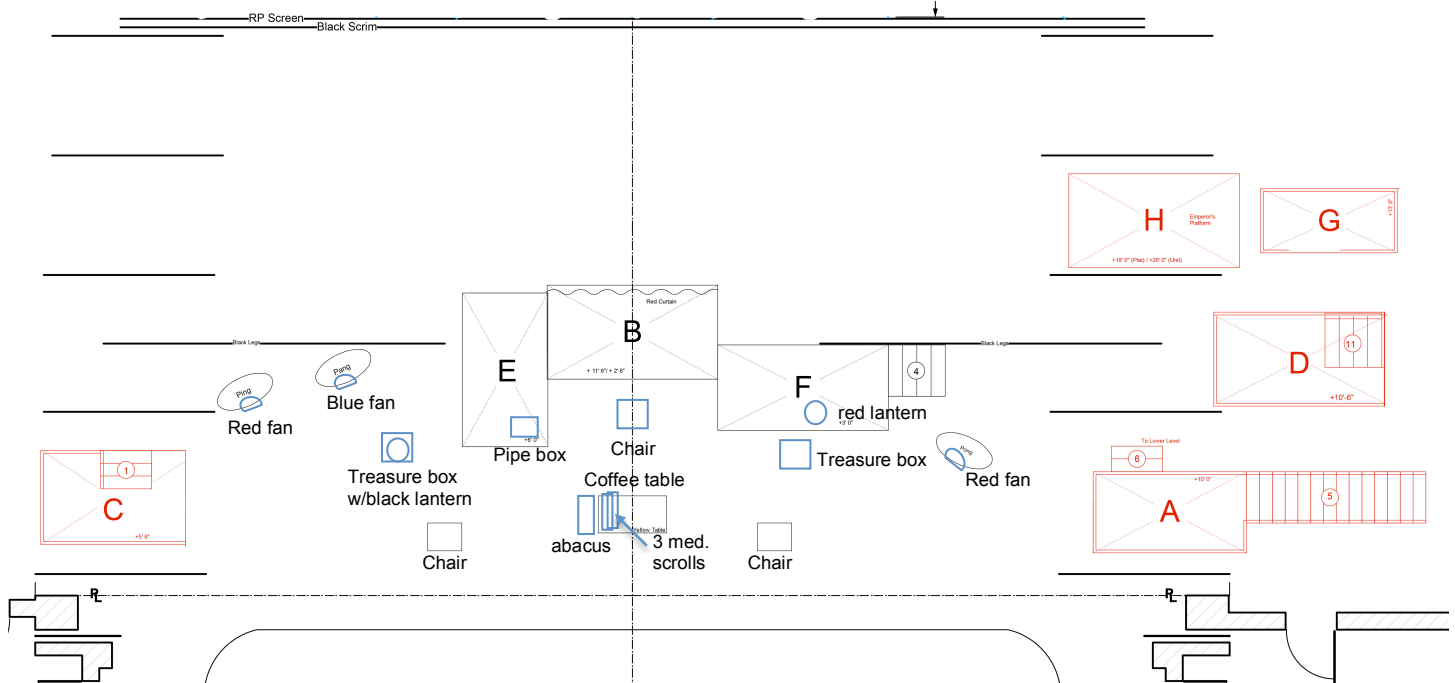
**INTERMISSION #1 (20:00 DURATION)**

**INTERMISSION SHIFT NOTES:**

TIME:	WHAT:	ACTION:	WHERE:	NOTES:
<b>END ACT I</b>	YELLOW COFFEE TABLE	SET	STORAGE→ACT II PRESET ONSTAGE	
	(3) YELLOW CHAIRS	SET	STORAGE→ACT II PRESET ONSTAGE	
	(2) TREASURE BOXES	SET	SR/SL PROP TABLES→ACT II PRESET ONSTAGE	
	(1) RED LANTERN	SET	SL PROP TABLE→ACT II PRESET ONSTAGE	
	(1) BLACK LANTERN	SET	SR PROP TABLE→ACT II PRESET ONSTAGE	
	(1) PIPE BOX w/pipe, matches	SET	SR PROP TABLE →ACT II PRESET ONSTAGE	WET PAPER TOWEL IN PIPE
	(1) ABACUS	SET	SR PROP TABLE→ACT II PRESET ONSTAGE	
	(1) BLUE PING FAN	TRACK	PING WAGON	ON STEP INSIDE; OPEN BACK
	(1) RED PANG FAN	TRACK	PANG WAGON	ON STEP INSIDE; OPEN BACK
	(1) RED PONG FAN	TRACK	PONG WAGON	ON STEP INSIDE; OPEN BACK

**SEE NEXT PAGE FOR ACT II ONSTAGE DIAGRAM AND PRESET**

ONSTAGE SETUP  
ACT II



STAGE RIGHT  
STAGE RIGHT PROP TABLE

**IN POLE BOX:**  
(2) YELLOW POLES  
(1) TIMUR STAFF

ONSTAGE  
(See Diagrams For Onstage Placements)

- (1) BLUE PING FAN (in PING wagon)
- (1) RED PANG FAN (in PANG wagon)
- (1) RED PONG FAN (in PONG wagon)
- (1) YELLOW TABLE
- (3) YELLOW CHAIRS
- (2) TREASURE BOXES
- (1) RED LANTERN
- (1) BLACK LANTERN
- (1) PIPE BOX w/pipe, matches
- (1) ABACUS
- (3) MEDIUM SCROLLS

STAGE LEFT  
STAGE LEFT PROP TABLE

- (3) RIDDLE SCROLLS
  - (2) SMALL SCROLLS
- IN POLE BOX:**  
(2) YELLOW POLES

SEE NEXT PAGE FOR ACT II RUNNING NOTES AND INTERMISSION SHIFT

**ACT II – RUNNING NOTES:**

TIME:	WHAT:	ACTION:	WHERE:	NOTES:
<b>12:30</b>	YELLOW COFFEE TABLE	STRIKE	SL	FROM <b>F</b> PLATFORM; DEAD
<b>(AFTER 1st SHIFT)</b>	(3) YELLOW CHAIRS	STRIKE	SR, SL	FROM <b>E, F, B</b> PLATFORMS; DEAD
	(2) TREASURE BOXES	STRIKE	SR, SL	FROM <b>E, F</b> PLATFORMS; DEAD
	(1) BLACK LANTERN	STRIKE	SR	FROM <b>E</b> PLATFORM; DEAD
	(3) MEDIUM SCROLLS	STRIKE	SR	FROM <b>E</b> PLATFORM; DEAD
	(2) SMALL SCROLLS	STRIKE	SR	FROM <b>E</b> PLATFORM; DEAD
	(1) ABACUS	STRIKE	SR	FROM <b>E</b> PLATFORM; DEAD
	(1) PIPE BOX	STRIKE	SR	FROM <b>E</b> PLATFORM; DEAD
	(1) RED LANTERN	STRIKE	SL	FROM <b>F</b> PLATFORM; DEAD

**44:25—END OF ACT II**

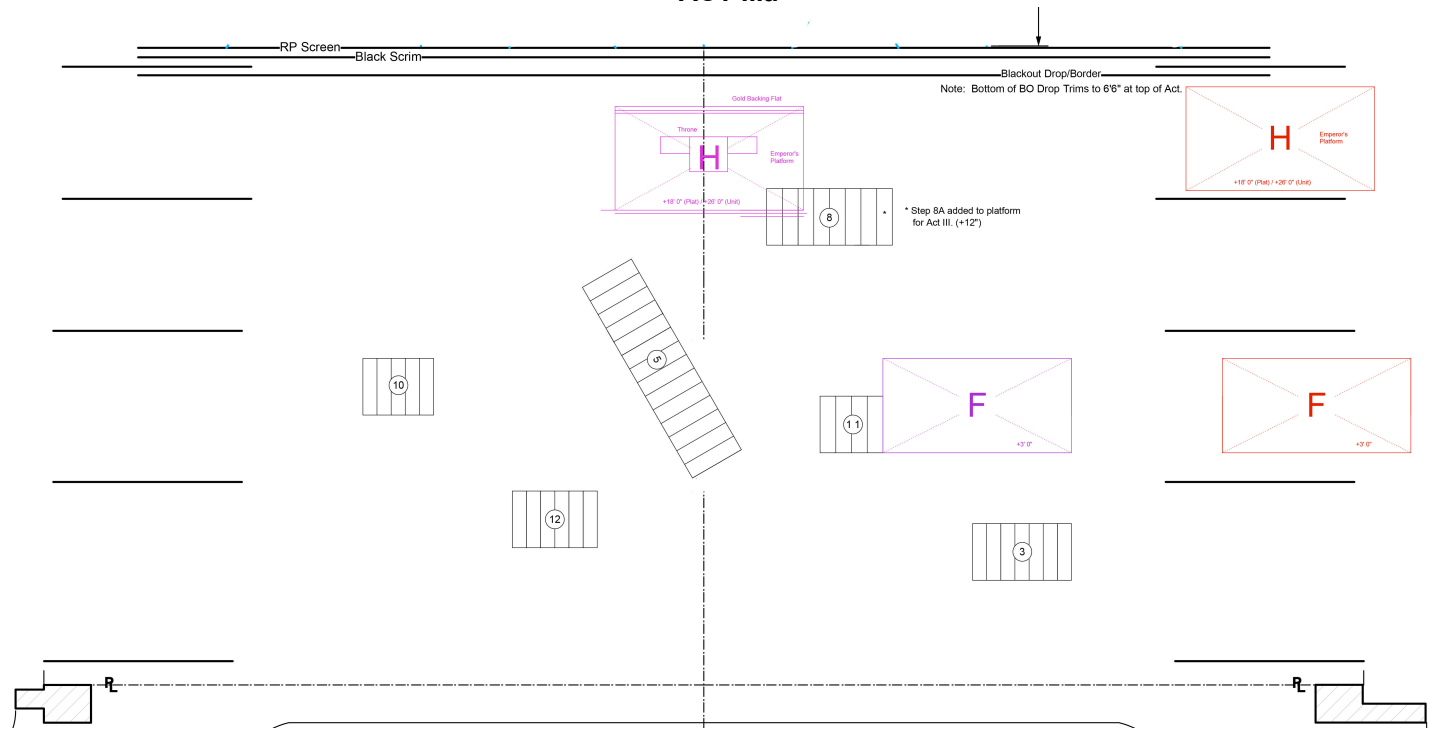
**INTERMISSION #2 (15:00 DURATION)**

**INTERMISSION SHIFT NOTES:**

TIME:	WHAT:	ACTION:	WHERE:	NOTES:
<b>END OF ACT II</b>	(4) TALL RED POLES	TRACK	→SL TABLE/BOX	CHECK
	(4) RED PADDED POLES	TRACK	→SL TABLE/BOX	CHECK
	(3) HANDMAIDEN FANS	TRACK	SL TABLE→SR TABLE	
	(1) TIMUR STAFF	TRACK	→SR TABLE/BOX	CHECK
	PING WAGON	TRACK	ONSTAGE→OFFSL	
	PANG WAGON	TRACK	ONSTAGE→OFFSL	
	PONG WAGON	TRACK	ONSTAGE→OFFSL	
	PING, PANG, PONG FANS	TRACK	WAGONS→SL TABLE	

**SEE NEXT PAGE FOR ACT III ONSTAGE DIAGRAM AND PRESET**

ONSTAGE SETUP  
ACT IIIa



SPIKED IN YELLOW ONSTAGE

STAGE RIGHT  
ONSTAGE RIGHT

- (3) HANDMAIDEN FANS
- (3) GOLD TRAYS w/treasure
- (1) AXE

ONSTAGE  
ONSTAGE CENTER

N/A

STAGE LEFT  
ONSTAGE LEFT

- (1) PING fan
- (1) PANG fan
- (1) PONG fan
- (3) HANDMAIDEN FANS
- (4) DAGGERS

LARGE PROPS/FURNITURE:

- PING WAGON
- PANG WAGON
- PONG WAGON

IN POLE BOX:

- (4) TALL RED POLES
- (4) RED PADDED POLES

Act III RUNNING NOTES:

TIME:	WHAT:	ACTION:	WHERE:	NOTES:
7:30	(4) HANDMAIDEN FANS	RECEIVE	SR/SL	FROM 4 "NUDES" (2 SL, 2 SR)

44:25—END OF ACT III

POST SHOW

TIME	WHAT	ACTION	WHERE	NOTES
END OF ACT III	ALL PROPS	STRIKE	TOS POSITIONS	
*ALL TIMES APPROXIMATE				

THANK YOU!